



**stylish
cool roofs**



See how stylish a cool roof can be?

Hanson Roof Tile is committed to providing energy efficient products to our customers. We're a member of the Cool Roof Rating Council (CRRC), and have numerous colors in its ratings program, with more to come!

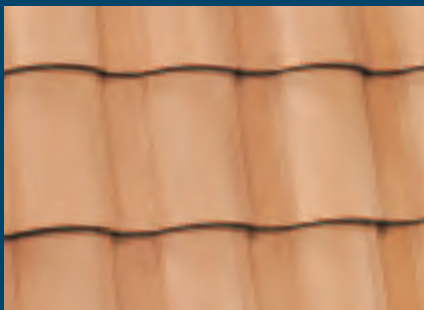


Hanson's products were tested by a CRRC lab for solar reflectance and thermal emittance. Listed on the CRRC's web site (www.coolroofs.org), these colors are recognizable by the U.S. Green Building Council's LEED® certification programs and California's Title 24 building standards. The reflectance and emittance numbers are combined to calculate the Solar Reflectance Index (SRI.) The higher the SRI value, the more of the sun's heat that is reflected back to the sky instead of absorbed by the building. LEED requires an SRI greater than 29 and Title 24 requires 25% reflectance for steep slope roofs.

A cooler roof that reflects solar energy allows home and building owners to be more energy and cost efficient. Hanson is able to offer a product that is diverse in roofing applications and available in many appealing colors and styles.

In addition to the durability, long life expectancy and weather resistance that concrete roof tile provides, Hanson Roof Tile includes added energy efficiency in its list of sustainable qualities. Please contact your Hanson Roof Tile sales representative to learn more.

Regal



R-616 Regal - Austin Sand

reflectance: .40
emittance: .85
SRI: 43



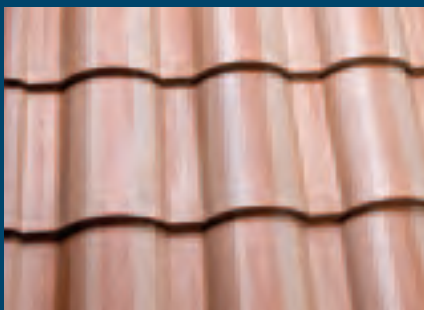
R-807 Regal - Kiwi

reflectance: .30
emittance: .89
SRI: 31



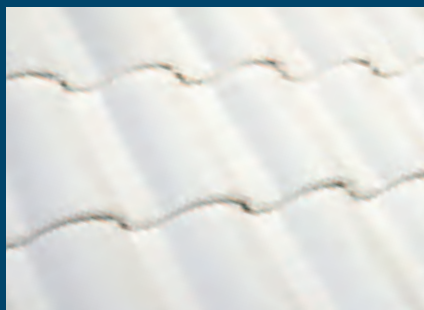
R-819 Regal - Coconut

reflectance: .32
emittance: .81
SRI: 31



R-3122 Regal - Cappuccino

reflectance: .30
emittance: .91
SRI: 32



R-4113 Regal - Ice White

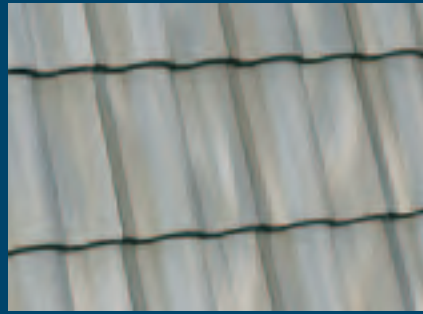
reflectance: .80
emittance: .93
SRI: 101

Hacienda



H-807 Hacienda - Kiwi

reflectance: .30
emittance: .89
SRI: 31



H-811 Hacienda - Platinum

reflectance: .31
emittance: .76
SRI: 27



H-819 Hacienda - Coconut

reflectance: .32
emittance: .81
SRI: 31



H-3122 Hacienda - Cappuccino

reflectance: .30
emittance: .91
SRI: 32



H-4113 Hacienda - Ice White

reflectance: .80
emittance: .93
SRI: 101

Slate



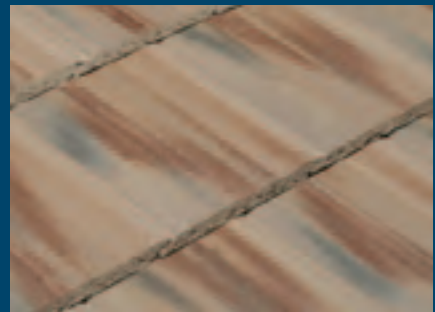
***SL-807 Slate - Kiwi**

reflectance: .30
emittance: .89
SRI: 31



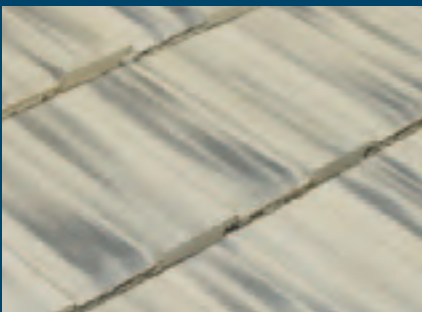
***SL-819 Slate - Coconut**

reflectance: .32
emittance: .81
SRI: 31



SL-3122 Slate - Cappuccino

reflectance: .30
emittance: .91
SRI: 32



***SL-3317 Slate - Dusk**

reflectance: .23
emittance: .93
SRI: 24



SL-4113 Slate - Ice White

reflectance: .80
emittance: .93
SRI: 101

* Actual profile differs. Split slate profile shown in photo

Hanson Building Products North America is comprised of Hanson Pipe & Precast, Hanson Pressure Pipe, Hanson Structural Precast, Hanson Brick, Hanson Hardscapes and Hanson Roof Tile. Based in Irving, Texas, Hanson Building Products North America employs approximately 4,500 people and operates 150 facilities with products available throughout the U.S. and Canada. One of the company's corporate strategies is continued focus on sustainability. Hanson Building Products is known throughout North America for excellent occupational safety, environmental stewardship, high quality standards and contributions to its local communities. To learn more about Hanson's quality products, services and building technology, please visit www.hansonbuildingproducts.com.



Hanson Roof Tile

www.hansonrooftile.com
800.411.TILE

WSRCA
Western States Roofing Contractors Association

